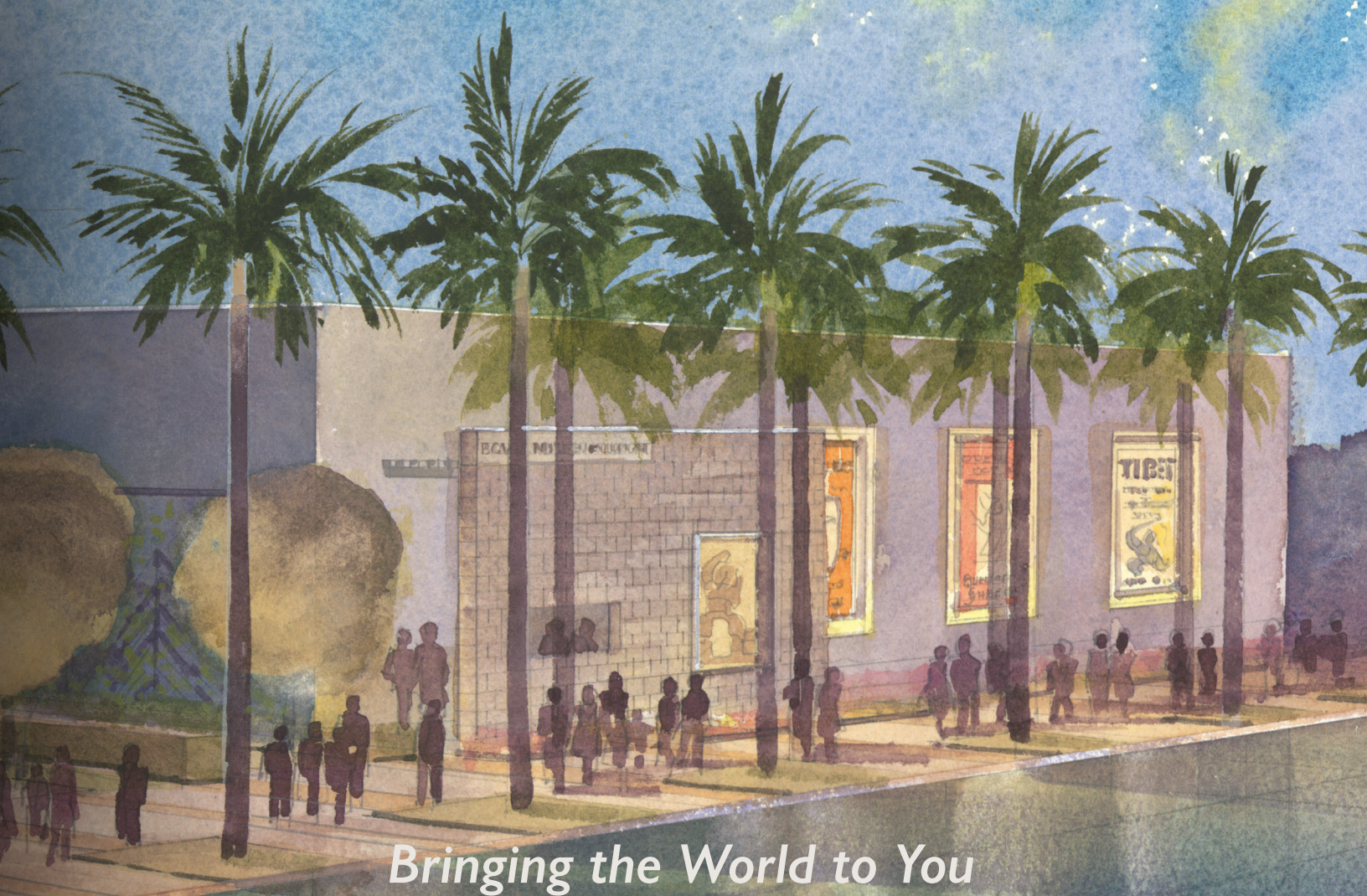


BOWERS

— AN INTRODUCTION —

MUSEUM



Bringing the World to You

BOWERS MUSEUM

ADDRESS

Bowers Museum

2002 North Main Street, Santa Ana, California 92706

714.567.3600

bowers.org



@bowersmuseum

HOURS

Bowers Museum & Gallery Store

Tuesday–Sunday,

10 AM – 4 PM

Closed: Mondays, Independence Day, Thanksgiving, Christmas, and New Year’s Day

Tangata Restaurant

Tuesday–Sunday, hours vary. Visit bowers.org/dine for details.

TICKET & PRICING

Bowers Museum General Admission

	Weekdays	Weekends
Adults:	\$13	\$15
Seniors (Age 62 & over) & Students:	\$10	\$12
Children (under 12):	Free	Free

(With Accompanying Paid Admission)

*Check www.bowers.org for special-ticketed exhibition pricing

Adult Group Tours (15 or more)

Groups of 15 or more receive special pricing and personalized scheduling.

Call 714.567.3680 or email grouptours@bowers.org for more information.

Free Days

Thank you to the Nicholas Endowment for sponsoring our Family Festivals on the first Sunday of each month. Bowers also offers free admission to Santa Ana residents, with proof of residency, each Sunday, through a generous donation in memory of Dorothy Goerl, and courtesy of the Lockhart Family.

MISSION

Bowers Museum *enriches lives through the world's finest arts and cultures.*

DESCRIPTION

One of Southern California's finest museums and Orange County's largest, the Bowers Museum promotes human understanding through art. Its state-of-the-art facilities enable the Bowers to present world-class exhibitions from the greatest museums in the world. Its own collections are particularly strong in the areas of African, Oceania, Asian, Native American, pre-Columbian art, and California plein air paintings. Its location, close to four major freeways and four miles south of Disneyland, makes the Bowers an ideal destination for visitors to Southern California.





BOWERS MUSEUM

HISTORY



The Charles W. Bowers Memorial Museum first opened its doors in 1936 as a city-run museum devoted primarily to the history of Orange County. In 1987, the City of Santa Ana closed the museum with the understanding that after careful study and a great deal of input from the community, the museum would be reopened as a totally transformed museum, ready to meet the challenges of the 21st century.



On February 18, 2007, the Bowers Museum opened the new Dorothy and Donald Kennedy Wing which added 30,000-square-feet and increased its total exhibition space. It features two new galleries: The East West Bank Gallery and Anderson-Hsu-Tu Gallery, in addition to the 300-seat Norma Kershaw Auditorium, the John M. Lee Court for events of up to 500 people, the Sharon D. Thompson Foyer, the S.L. and Betty Huang Courtyard, and more to meet the needs of a growing community and audiences. The Bowers Museum has been accredited by the American Alliance of Museums and has been widely acclaimed in broadcast and in print, including many national magazines such as *U.S. News & World Report*.

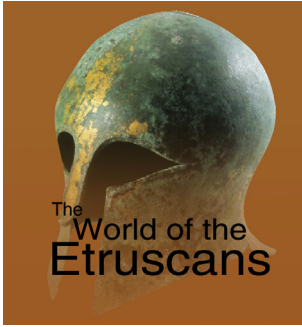
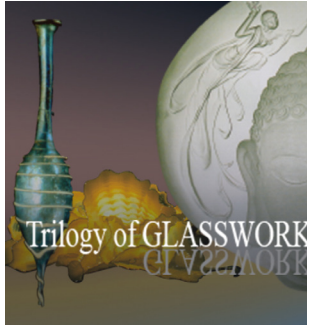
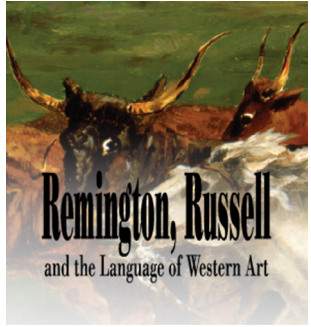


BOWERS MUSEUM

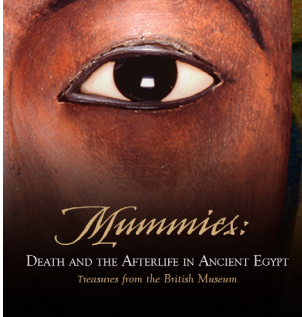


COLLECTION HIGHLIGHTS

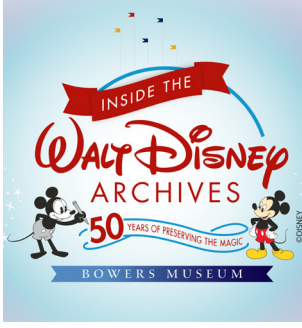
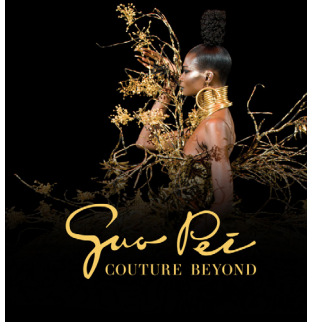
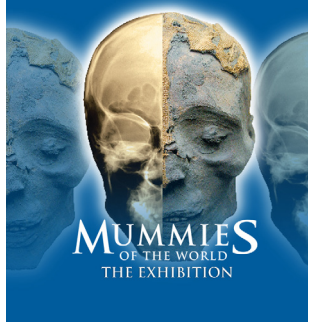
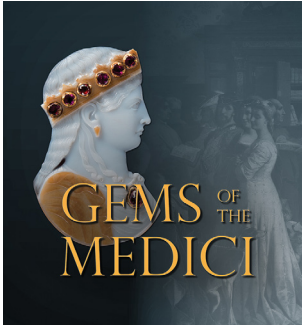
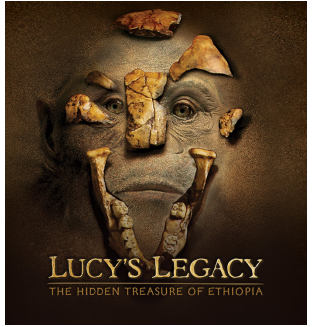
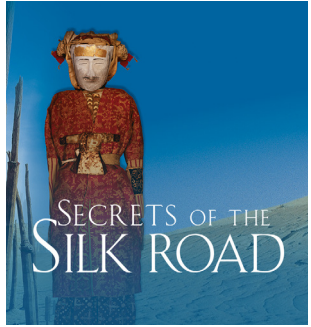
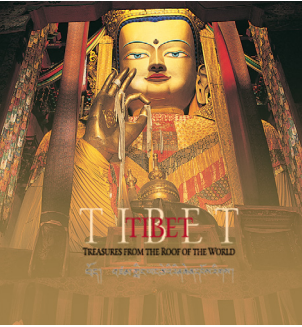
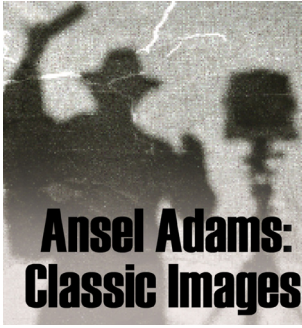
The Bowers Museum's permanent collection provides an opportunity to examine, compare, and contrast the highly diverse cultures of the world through time. The collection includes more than 90,000 objects, and features notable strengths in diverse areas such as pre-Columbian Mesoamerica; Native American art and artifacts; African and Oceanic art, particularly from Papua New Guinea; and California plein air paintings. Among the artists that the Bowers has collected are William and Alberta McCloskey, Frank Colburn, William Wendt, Gardner Simons, and Guy Rose. The collection is available for viewing at bowers.org/collections.



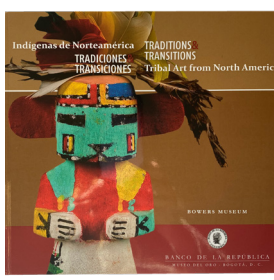
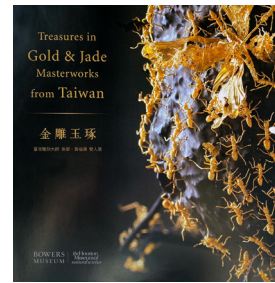
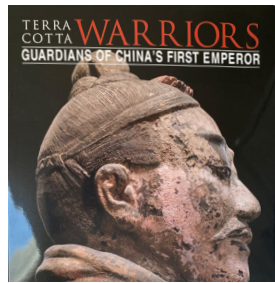
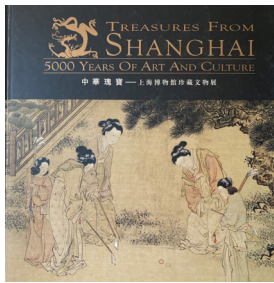
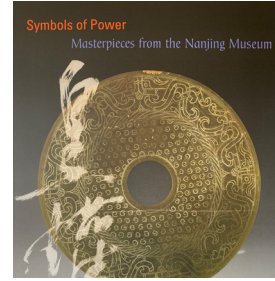
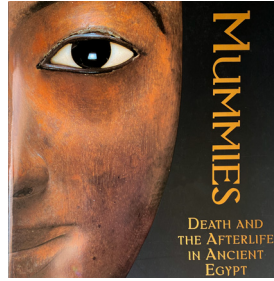
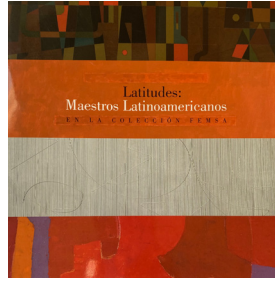
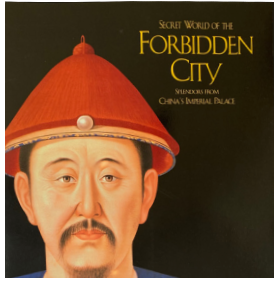
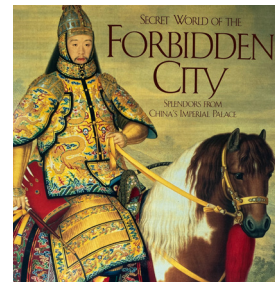
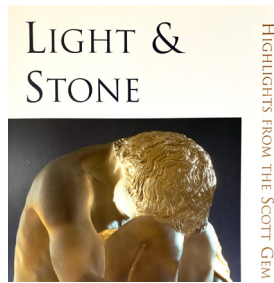
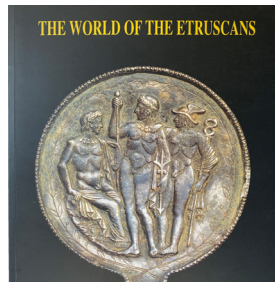
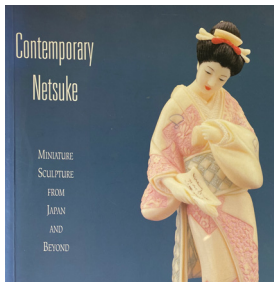
EXHIBITION HIGHLIGHTS



Since its reopening in 1992, the Bowers Museum has earned an international reputation for presenting exhibitions of the highest caliber. For its opening, the museum presented *Tribute to the Gods; Treasures of the Museo del Oro, Bogota*, and *Porcelains from the Chang Foundation, Taipei*. Since that time, the Bowers' special exhibitions program has presented more than 50 exhibitions; most notable have been *Visions of Guadalupe; Jade: Ch'ing Dynasty Treasures from the National Museum of History, Taiwan; Treasures from the Royal Tombs of Ur; Secret World of the Forbidden City; Splendors from China's Imperial Palace; Egyptian Treasures from the British Museum; Holy Land: Dead Sea Scrolls, House of David Inscription; Remington Russell; Trilogy of Glass; Etruscans; Gems; Symbols of Power from the Nanjing Museum, China; Queen of Sheba; Mummies: Death and the Afterlife in Ancient Egypt...Treasures from the British Museum; Treasures from Shanghai: 5000 Years of Chinese Art and Culture; Ansel Adams: Classic Images; Terra Cotta Warriors: Guardians of China's First Emperor; Secrets of the Silk Road; Benjamin Franklin: In Search of a Better World; Warriors, Tombs and Temples: China's Enduring Legacy; Lucy's Legacy: The Hidden Treasure of Ethiopia; Gems of the Medici; Soulful Creatures: Animal Mummies in Ancient Egypt; China's Lost Civilization: The Mystery of Sanxingdui; The 1968 Exhibit; The Red that Colored the World; Mummies of the World; Guo Pei: Couture Beyond; Inside the Walt Disney Archives: 50 Years of Preserving the Magic; and Treasures in Gold & Jade: Masterpieces from the Nanjing Museum.*



BOWERS MUSEUM



PUBLICATIONS

The Bowers Museum prides itself on an aggressive production of scholarly publications related to its mission and permanent collection. Since 1992, the Bowers Museum has published many monographs, books and exhibition catalogues, including *Tribute to the Gods*, *Treasures of the Museo del Oro, Bogotá Colombia*; *Visions of Guadalupe: Selections from the Museum of the Basilica de Guadalupe*; *Seeking Immortality: Chinese Tomb Sculpture from the Schloss Collection*; *Partners in Illusion: William and Alberta McCloskey*; *Jade: Ch'ing Dynasty Treasures from the National Museum of History, Taiwan*; *Beethoven: Musical Treasures from the Age of Revolution and Romance*; *Shamans, Gods & Mythic Beasts: Colombian Gold and Ceramics in Antiquity*; *Secret World of the Forbidden City: Splendors from China's Imperial Palace*; *Egyptian Treasure*; *Queen of Sheba*; *Mummies: Death and the Afterlife in Ancient Egypt...Treasures from the British Museum*; *Treasures from Shanghai: 5000 Years of Chinese Art and Culture*; *Terra Cotta Warriors: Guardians of China's First Emperor*; and our latest publication, *Treasures in Gold & Jade: Masterworks from Taiwan*.



EDUCATION PROGRAMS

By opening its 11,000-square foot children's museum, Kidseum, in December 1994, the Bowers Museum made a strong statement about its role in children's education. In addition, the museum's docents reach out to more than 80,000 school children each year through school tours of the museum. Bowers' commitment to engage a broad and diverse audience is evident in the variety of exciting programs. These include family cultural arts festivals, lectures, film series, symposia, and teacher workshops.

BOWERS MUSEUM

BUILDING SIZE

Total museum complex size: 158,008-square-feet
Main museum size prior to 2006 expansion: 63,000-square-feet
Kennedy Wing Expansion: 30,000-square-feet
Total Exhibition Space: 45,000-square-feet
Kidseum size: 11,000-square-feet
John M. Lee Court size: 5,800-square-feet

MAIN PARTS OF DOROTHY AND DONALD KENNEDY WING

Janis Agopian Fountain
Anderson-Hsu-Tu Gallery
Lydia Yang Chou and Jesse B. Chou North Entryway
East West Bank Gallery
First American Corporation Courtyard
S.L. and Betty Huang Courtyard
Dr. David and May Hsu Foyer
Norma Kershaw Auditorium
Dr. Wan-Lin & Assumpta Kiang Family Foundation Rotunda
John M. Lee Court
Donald and Carol Murray Entryway
Anthony W. and Sharon D. Thompson Foyer
Anne Shih Garden
Alice Hsu and Elsa Hsu Garden
Wells Fargo Stage

MUSEUM OPERATIONS

Total budget: \$5.5 million
Annual attendance: 150,000
Staff size: 85
Membership: 7,000 members

GENERAL

The Bowers Museum is a nonprofit, tax exempt 501(c)(3) organization.

FUNDING

The Bowers' exhibitions, programming, and operations are member supported and funded through contributions from individuals, corporations, and foundations. Significant funding is also provided by an annual grant from the city of Santa Ana.



WELCOME

to the BOWERS

Gold and Carol Henry Entrance

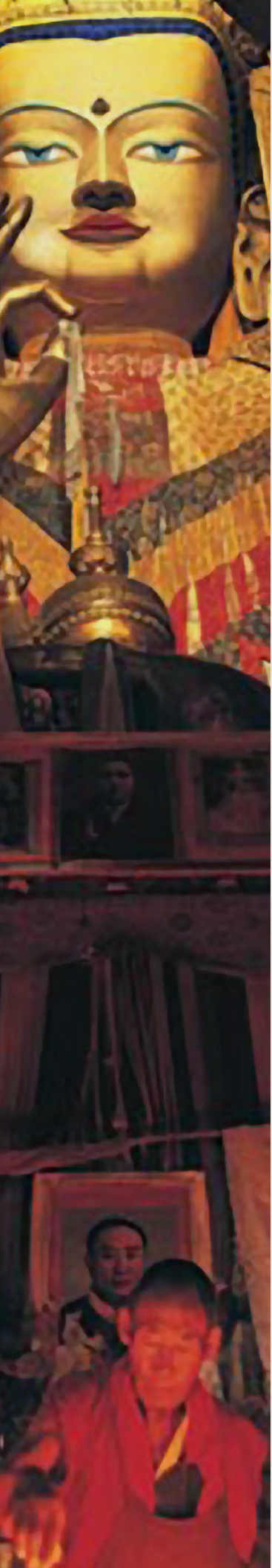
Small plaque or sign on the wall near the entrance.

BOWERS MUSEUM



MAJOR ACCOMPLISHMENTS

For nearly eight decades, the Bowers Museum has evolved in many ways. From a relatively small museum focusing on Orange County history, the Bowers is now 8.6 times larger, the largest museum in Orange County, and one of the finest cultural arts museums in the region. Its collections, programs, and exhibitions still include Orange County history, but now reflect the demographics of Southern California by celebrating its diverse cultural makeup, with major emphasis on the fine arts of the indigenous peoples of the Americas, Africa, and the Pacific Rim. Shortly after the Bowers celebrated its 50th anniversary in 1986, the museum closed its doors for a period of self-study, evaluation, and rebuilding for the 21st century. What emerged when it reopened its doors in October of 1992 was a new museum ready for the next millennium. With the addition of the new Dorothy and Donald Kennedy Wing in February of 2007, the museum added a permanent Chinese exhibition, along with additional galleries for special exhibitions, spacious event venues, and a 300-seat auditorium, all to advance its mission to *enrich lives through the world's finest arts and cultures.*



OUR MILESTONES

Voted “Best Museum in Orange County” by readers of the Orange County Register newspaper for 26 consecutive years (2019).

Annual budget increased from \$1.5 million in 1989 to \$6.5 million today.

Membership growth from 200 members in 1991 to over 7,000 today.

Facility increased in size from original 10,080 square-feet to over 100,000 square-feet today.

Staff has grown from 38 in 1989 to 85 today.

Volunteer corps of more than 300 individuals contributes between 40,000 and 50,000 hours each year.

Developed and opened in 1994 an 11,000-square foot children’s museum subsequently named *Kidseum* celebrated its 25th anniversary in 2019.

Since 1992, presented more than 70 special exhibitions from around the world including exhibitions that have traveled both nationally and internationally.

Negotiated exhibition protocols with Colombia, Taiwan, China, Italy, Israel, Great Britain, Mexico and Ethiopia.

Served more than 80,000 school children annually through docent guided tours, community outreach programs, and participatory art classes.

Hosted numerous academic symposia covering a wide range of topics including Former Secretary of State Madeleine Albright and Renowned Egyptian Archaeologist Dr. Zahi Hawass.

Published many books, monographs, and exhibition catalogues, including *Tribute to the Gods, Treasures of the Museo del Oro, Bogotá, Colombia; Visions of Guadalupe: Selections from the Museum of the Basilica de Guadalupe; Guardians of the Life Stream; Seeking Immortality; Partners in Illusion; Contemporary Netsuke; Jade: Ch’ing Dynasty Treasures from the National Museum of History, Taiwan; Beethoven: Musical Treasures from the Age of Revolution and Romance; Shamans, Gods & Mythic Beast: Colombian Gold and Ceramics in Antiquity and Secret World of the Forbidden City: Splendors from China’s Imperial Palace; Queen of Sheba; Mummies: Death and the Afterlife in Ancient Egypt; Egyptian Treasures of the British Museum; Mummies of the British Museum; Treasures from Shanghai: 5000 Years of Chinese Art and Culture; Terra Cotta Warriors: Guardians of China’s First Emperor; Secrets of the Silk Road; Sacred Gold: Pre-Hispanic Art of Colombia; and Legacy of Bounty: Paintings from the Bowers Museum.*

The Bowers Museum was recognized in the July 1993 issue of *U.S. News & World Report* as one of nine “must see” museums in the United States.

BOWERS MUSEUM

PERMANENT EXHIBITIONS

CALIFORNIA BOUNTY: IMAGE AND IDENTITY, 1850-1930

ONGOING

California Bounty is the first curatorial interpretation of the museum's distinguished painting collection since 1994. Viewers will take a rambling journey through California's visual history, a history shaped by a unique mixture of Mexican and Anglo traditions as well as the state's position on the Pacific Rim. Each painting epitomizes California's land, people and offerings as a place of produce and plenty. The exhibition brings together many of the museum's most cherished paintings, including works by early artists documenting the Mission and Rancho periods; landscapes by plein air painters portraying California's coasts and canyons; sumptuous portraits and still-life paintings of flowers and paper-wrapped fruit by Alberta and William McCloskey; and a small selection of works indicating California as a continued place of possibility.



SPIRITS AND HEADHUNTERS: ART OF THE PACIFIC ISLANDS

ONGOING

Photographer Chris Rainier guest curated this exhibition of art from an area spanning the geographic region collectively referred to as Oceania. This comprehensive exhibition highlights masterworks from the three cultural regions of Micronesia, Melanesia, and Polynesia. Particular focus is placed on New Guinea, land of the headhunter, and the rich artistic traditions infused into daily and ritual life. Submerge into a visually stunning world and come face to face with larger-than-life masks, finely crafted feast bowls, objects associated with the secretive Sepik River men's house, beautiful shell and feather currency, magic figures and tools of the shaman, objects related to seagoing trade routes, gorgeous personal adornments, weapons of warfare and the most precious of human trophies taken in retribution.



MIAO: MASTERS OF SILVER

ONGOING

Featuring over 250 intricate works of silver, Miao: Masters of Silver features jewelry and textiles primarily made in China's Guizhou Province, where the largest population of Miao people reside. Male silversmiths create a variety of ornaments through casting, smelting, repoussé (a reverse hammering technique), forging, engraving, knitting, coiling, cutting, and other methods. Concepts such as beauty, unity, fortune, and pride are expressed as visual abstractions and geometric motifs.



SACRED REALMS: TEMPLE MURALS BY SHASHI DHOJ TULACHAN FROM THE GAYLE AND EDWARD P. ROSKI COLLECTION

ONGOING

The nine oversized paintings shown in this exhibition are all the work of one extraordinary 69-year-old Buddhist monk named Shashi Dhoj Tulachan, a second generation thangka artist living in Tuksche, a remote village located in Mustang, Nepal's northernmost district adjacent to Tibet. Shashi Dhoj Tulachan has devoted much of his life to the restoration of a nearby 18th century gompa (Tibetan monastery) known as the Chhairi Gompa. The paintings in this collection are not thangkas in the traditional sense. Thangkas are usually much smaller and are rolled on canvas so that they can be easily transported and hung anywhere for teaching. The thangkas exhibited here are similar in size to mural paintings found in monasteries.



PERMANENT EXHIBITIONS

GEMSTONE CARVINGS: MASTERWORKS BY HAROLD VAN PELT

ONGOING

For over 35 years Harold Van Pelt has quietly been perfecting the art of carving quartz, rock crystal and agate gemstones. Gemstone Carvings: Masterworks by Harold Van Pelt is a display of his mastery.

Each work in the exhibition is a reflection of hundreds of hours of craftsmanship. Van Pelt's working of the stone down to paper-thin walls brings out the gorgeous natural quality and colors of agate and gives quartz the transparency of glass. Transformed by one man's vision and skill from a solid stone to an incredibly delicate work of art, the gemstone carvings of Harold Van Pelt have to be seen to be believed. The Bowers Museum is proud to welcome this collection back to Santa Ana, where it was first exhibited in 2010.



CALIFORNIA LEGACIES: MISSIONS AND RANCHOS (1768-1848)

ONGOING

California Legacies: Missions and Ranchos (1768-1848) features objects related to the settlement of Alta California through Spanish land grants, life at the California Missions and the wealth and lifestyles of the first families who flourished under Mexico's rule of California known as the Rancho period. The collection originating from Orange County's missions and ranchos includes the first brandy still to be brought to California, a statue of St. Anthony that originally stood in the Serra Chapel at Mission San Juan Capistrano, a dispatch pouch used by Native Americans to deliver messages between missions, and fine clothing, paintings and daily use objects.



CERAMICS OF WESTERN MEXICO

ONGOING

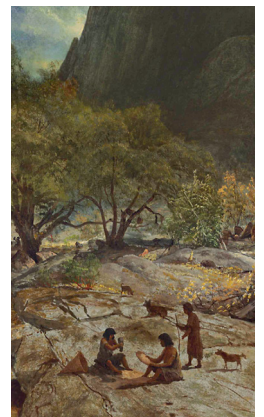
Encounter Pre-Columbian Art from the western Mexican states of Colima, Nayarit and Jalisco. Visitors learn about West Mexican shaft tombs and the cultures that used this means of burying their dead. A selection of the ceramic figures placed inside shaft tombs to accompany the deceased in the afterlife are on display. The exhibition includes artworks that depict imagery from daily life, that show the intensity of West Mexican figurative work and that are naturalistic in form like the famously plump Colima dogs.



THE FIRST CALIFORNIANS

ONGOING

This extensive collection of Native Californian art and artifacts demonstrates the culture and history of the Southern California Coastal Indians. The visitor can explore the ways that Indians of the region interacted with their environment for food, clothing, adornment, and religion. The exhibition is presented in the Richard P. Ettinger Gallery.



BOWERS MUSEUM

EDUCATIONAL PROGRAMS

The Bowers Museum is a resource for students, adults, and educators alike. Through its many programs, the museum provides varied learning experiences that are innovative and unique.

*Programs are now offered online and onsite as permitted in accordance with the State and local COVID 19 health and safety guidelines. Visit bowers.org for the latest updates.



SCHOOL TOURS

Tours and art classes at the Bowers Museum are designed for grades K-12 and are available all year to accommodate school districts and school site services with year-round schedules. These experiences provide unique opportunities for students to engage with cultural arts from around the world. Students enjoy an interactive, docent guided or self-guided tour of our permanent and/or changing exhibitions designed to explore critical thinking skills and promote cross-cultural understanding. As part of their tour, students participate in a hands-on art class inspired by themes in our galleries that they are able to take home with them and share with their families.



ADULT TOURS

One-hour tours are offered by trained docents for exhibitions on view. Tours may be booked in advance for groups of 15 or more for a small fee during the weekday and weekend. Free drop-in gallery talks are offered regularly for adults in English, Spanish or Chinese.



PUBLIC PROGRAMS

A variety of talks, films, classes, and musical performances are offered weekly throughout the museum, including the state-of-the-art Norma Kershaw Auditorium, the John M. Lee Court, and outside in the historic Mission-style Margaret and Cleo Key Courtyard.

Talks are the most popular and provide Bowers' visitors with access to respected speakers and experts from around the world. Each offers a special perspective on the collections, exhibitions and themes housed and explored by the Bowers Museum through the varied lenses of archaeology, anthropology, education, social sciences and the arts. Talks are mostly offered in educational support of the themes and topics explored in our visiting

exhibitions as well as permanent gallery collections. Exhibition-related talks usually include perspectives from experts in related fields of study. We also offer popular lectures in partnerships with Bowers Affiliate Councils and other community providers to give visitors a broad range of insight into special interests and popular themes.

After hours programming provides visitors with the unique opportunity to visit the museum in the evening while enhancing the experience with a variety of events including dinner, outdoor movies, performances and art making. These programs are produced and promoted in partnership with Tangata Restaurant and the Patina Restaurant Group.

BOWERS MUSEUM



EDUCATOR WORKSHOPS

Special teacher workshops based on current exhibitions are offered throughout the year. These workshops provide instructional information that can be applied directly within the classroom; they assist in pointing the teachers to subjects that will stimulate student learning through computer research, hands-on projects and academic subjects.

FAMILY FESTIVALS

These free family festivals speak to the very core of the Bowers' mission to enrich lives through the world's finest arts and cultures. Each month, the Bowers provides visitors with free access to high quality performance and visual arts that celebrate rich cultures from around the world. The festivals occur on the first Sunday of each month from 11am to 3pm. This program serves local, low-income children and adults as well as the broader community. Approximately 19,500 children and adults are served per year, or an average of 1,625 people each month.



AFTER SCHOOL LEARNING CENTER AT KIDSEUM

The Bowers offers a free After School Learning Center for Santa Ana children grades 1st-8th (younger sisters and brothers in Kindergarten can register with an older sibling in 1st grade and above.) It runs from 2:30 – 5:30 Monday – Friday all year.

The After School Learning Center at Bowers' Kidseum is an enrichment program that provides year-round after school care, homework support, and arts and cultural instruction to underserved students that reside and attend schools in Santa Ana. When students arrive in the afternoon, they are served healthy snacks and then the rest of their (up to) three hours at the program includes a mixture of homework support, special art-class and art-making activities, free play, organized programs with special guest instructors and/or performances, as well as scheduled visits to the Bowers Museum to tour permanent and special exhibitions. At the end of each school year, students are taken by bus to a local college to expose them to colleges and develop a visible pathway to college.

For parents, guardians and teacher, there are even more reasons to come as our yearly surveys show the program has a big impact on the lives of the local children and their families:

- 100% of students improved their math skills
- 91% improved their English language arts skills
- 90% improved their social studies skills
- 85% improved their science skills
- 100% of parents reported improved behavior at home
- 99% of parents reported improved self-esteem and confidence in their children
- 90% of parents believe their children have benefited from the program because they learn about a variety of cultures through art programs and museum exhibits



ANNE'S TREASURES

This arts engagement program for seniors takes place every 2nd and 4th Thursday morning and serves over 100 participants at each event. Seniors age 62 and over from the broader community are welcomed to the museum to enjoy and learn about different cultural art traditions from around the world. The majority of participants are from the local Vietnamese, Chinese and Latino communities.

When creating art, the brain is always at work, there are decisions to be made about subject, placement, color choice and size. Creating art lessens anxiety into relaxation as seniors become immersed in a project that gives them a feeling of control over their environment. Evaluations of regular attendees have shown evidence of significant impact and growth in mental health as well as arts and cultural understanding.



AFFILIATE COUNCILS

Museum Councils are special interest groups that support the museum and its programs through fundraising, volunteering and/or providing educational programs. The Bowers Affiliate Councils (BAC) meets as a group once a quarter to share activities and discuss strategies for supporting upcoming museum educational programming and exhibitions.

The current roster for the BAC includes the following groups with more than half participating actively throughout the year:

Bead Society of Orange County

Provides the community with educational resources regarding the artistic, historical and intercultural significance of beads through regular meetings and annual events at the museum.

Bells

Serve as ambassadors of good will by volunteering at the information and membership desks at social and fundraising functions.

Bowers California Art Council

Provides support by assisting the museum with conservation, acquisition and exhibition of California plein air paintings and traditional art.

Chinese Cultural Art Council

Promotes Chinese cultural arts in the community through lectures and activities in conjunction with the museum.

Collectors Council

Provides experiences in art collection and connoisseurship. Members enjoy tours of private collections and galleries as well as travel opportunities and special parties.

Docent Guild

Their 130+ active members provide tours of museum exhibitions to visitors, school and adult groups. The guild performs community outreach and holds regular meetings and programs at the museum.

Italian Cultural Art Council

Present the annual Italian Family Festival celebration in the museum courtyard, as well as a monthly Italian cultural film series and educational programs for adults and children.



