

# ONSITE ADULT GROUP TOURS



2022  
SPRING -  
FALL

## Take a Group Tour Around the World at the Bowers Museum!

*Enjoy over 9 permanent exhibits and featured exhibitions through an exclusive self-guided or docent-guided tour, onsite or online.*

- Group of 15+ enjoy special discounts on admissions and dining.
- Groups of 20+ receive 20% off in the Gallery Store!
- Ask about the special Group Menu from Tangata Restaurant.

## NOW ON VIEW: 3 Featured Exhibitions + 9 Permanent Galleries



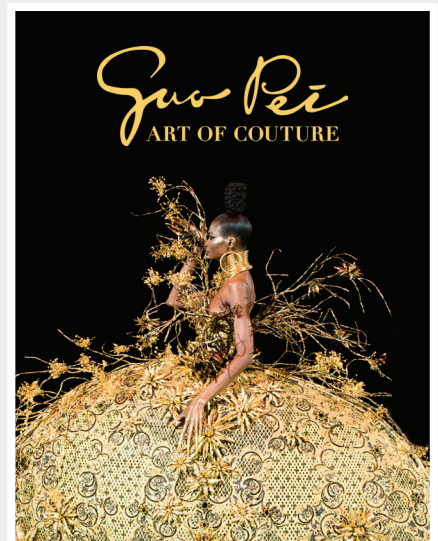
DECEMBER 12, 2021 – JUNE 19, 2022

The entirely new exhibition *All That Glitters: The Crown Jewels of the Walt Disney Archives* will let visitors see the jewelry and accessories from *Titanic*, *The Princess Diaries* and some of their favorite Disney and 20th Century Studios films in a way they have never been able to before.



FEBRUARY 12, 2022 – AUGUST 28, 2022

The Bowers Museum's newest partnership with the Royal Geographical Society (with IBG), *Everest: Ascent to Glory*, combines photographs, films, and artifacts from five expeditions leading up to and including the earliest successful attempt to climb the colossal mountain that the Tibetan people call the "Mother Goddess of the World."



OPENING NOVEMBER 2022

Stay tuned for details this May.

## BOWERS MUSEUM

Book your group today! ☎ 714.567.3680 or ✉ [tours@bowers.org](mailto:tours@bowers.org)

Tag us on photos from your visit and follow us @bowersmuseum

# PERMANENT GALLERIES FROM AROUND THE GLOBE

## CALIFORNIA BOUNTY

Image and Identity,  
1850–1930



## MIAO

Masters of Silver



## FIRST CALIFORNIANS



## CERAMICS OF WESTERN MEXICO



## GEMSTONE CARVINGS

The Masterworks of  
Harold Van Pelt



## SPIRITS AND HEADHUNTERS

Art of the Pacific Islands



## SACRED REALMS

Temple Murals by  
Shashi Dhoj Tulachan

From the Gayle and  
Edward P. Roski Collection



## CALIFORNIA LEGACIES

Missions and Ranchos  
(1768–1848)



Book your tour at [bowers.org](http://bowers.org)

# BOWERS MUSEUM

2002 North Main Street, Santa Ana, CA 92706 | 714.567.3600 | [bowers.org](http://bowers.org)